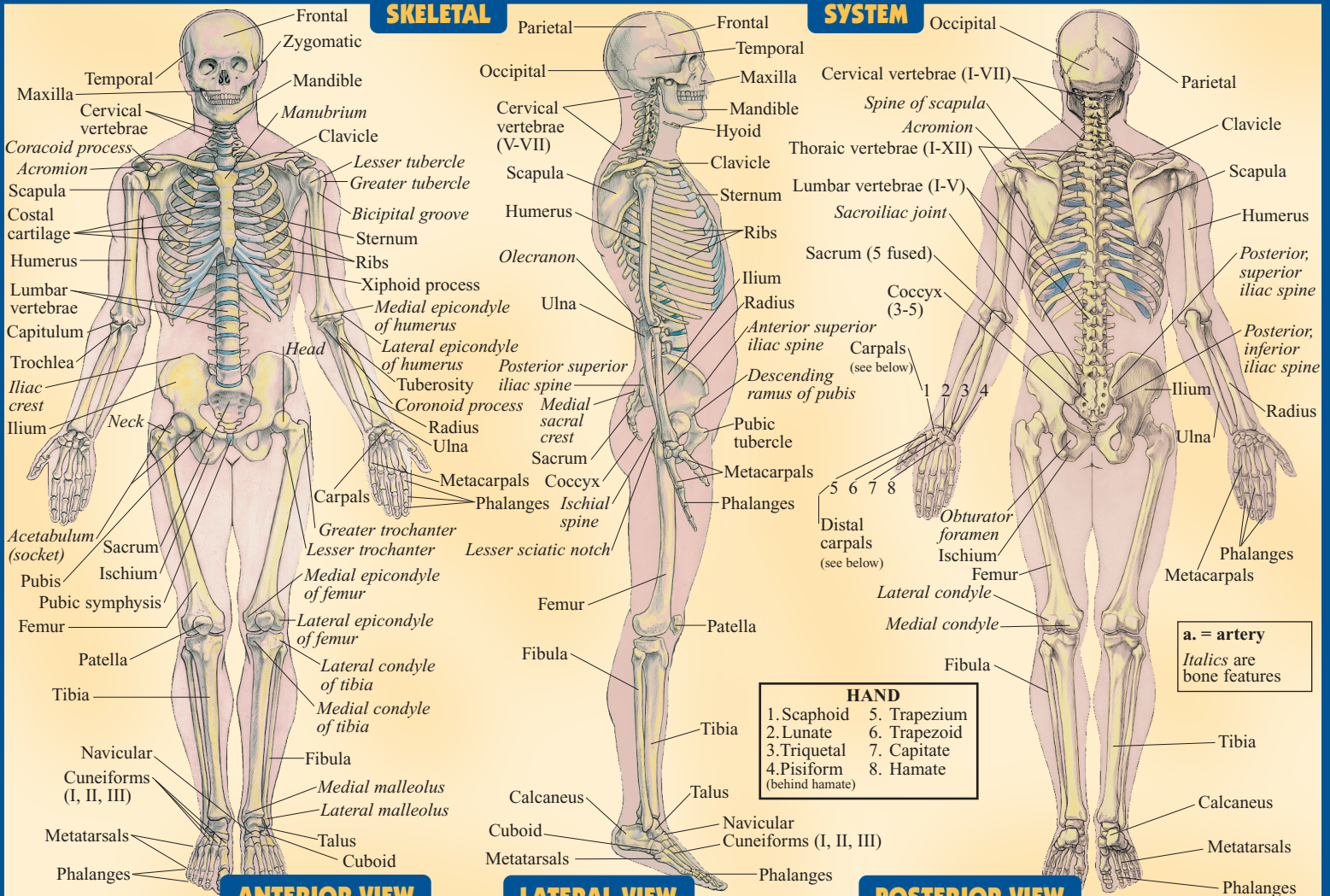


SKELETAL SYSTEM

SKELETAL

SYSTEM



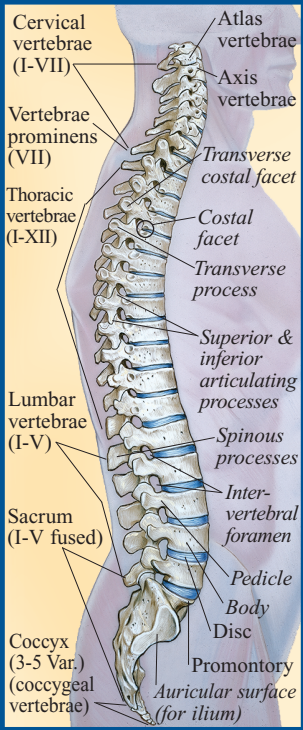
ANTERIOR VIEW

LATERAL VIEW

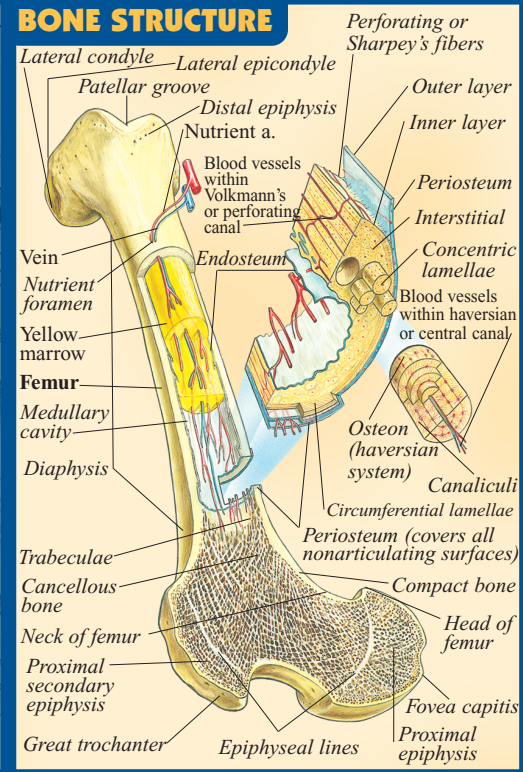
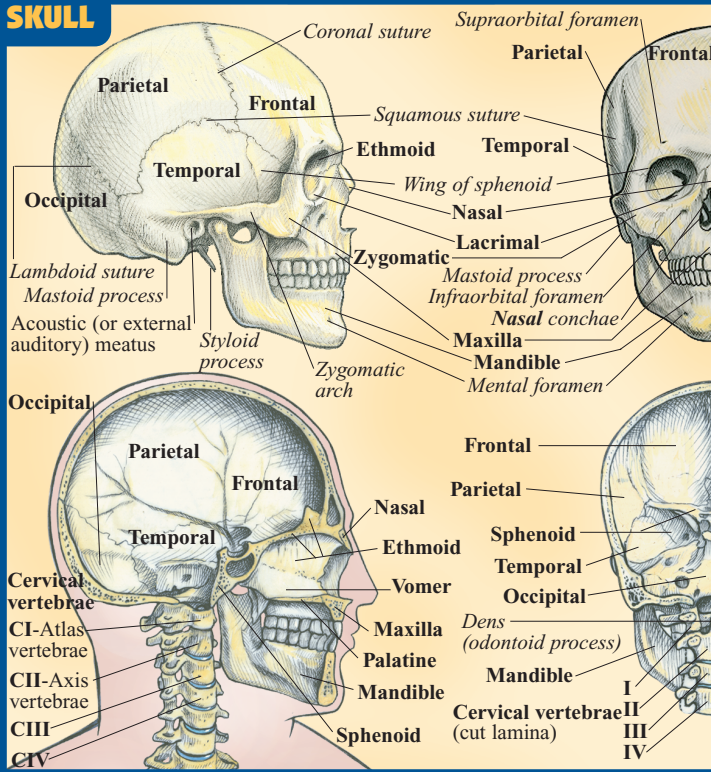
POSTERIOR VIEW

SKULL

BONE STRUCTURE



VERTEBRAL COLUMN



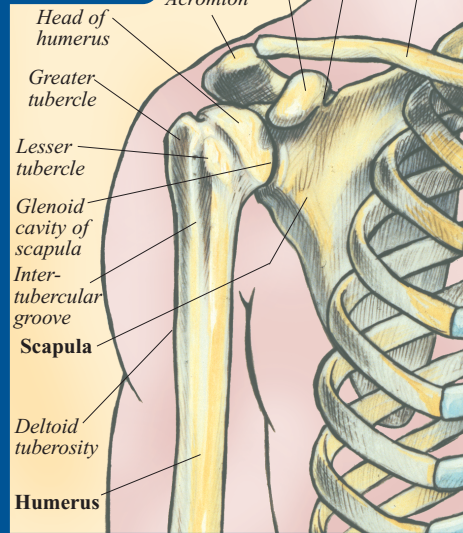
a. = artery
Italics are bone features

HAND

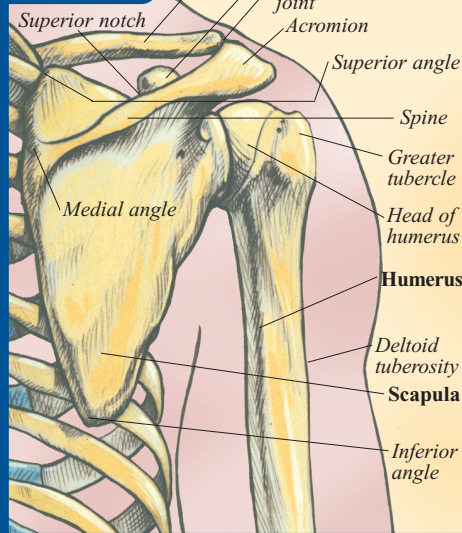
1. Scaphoid	5. Trapezium
2. Lunate	6. Trapezoid
3. Triquetral	7. Capitate
4. Pisiform	8. Hamate

(behind hamate)

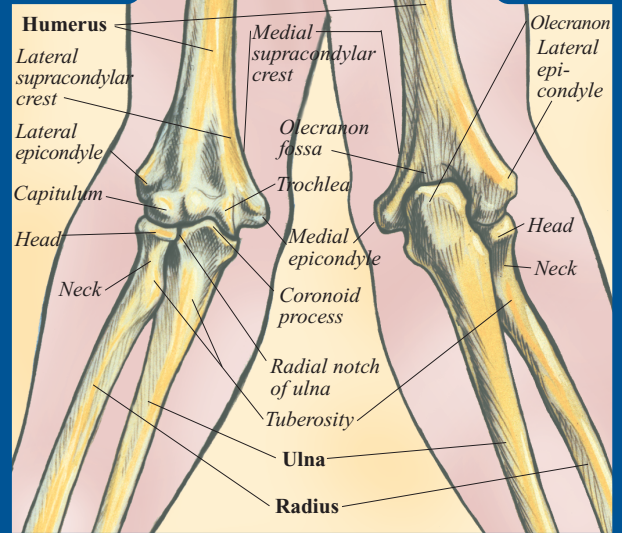
SCAPULA (FRONT)



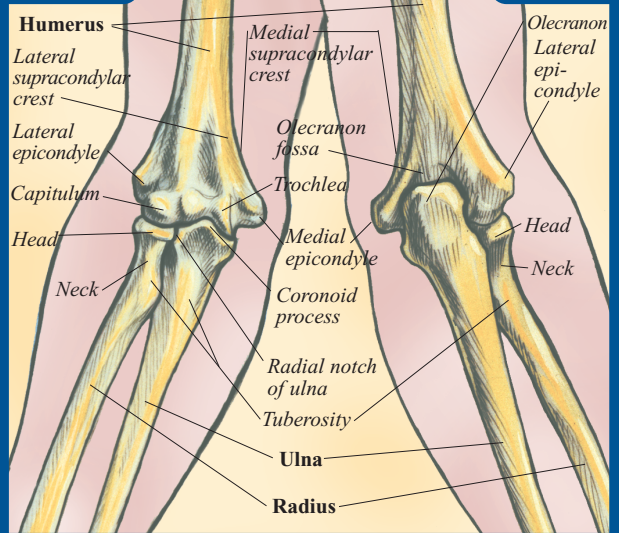
SCAPULA (BACK)



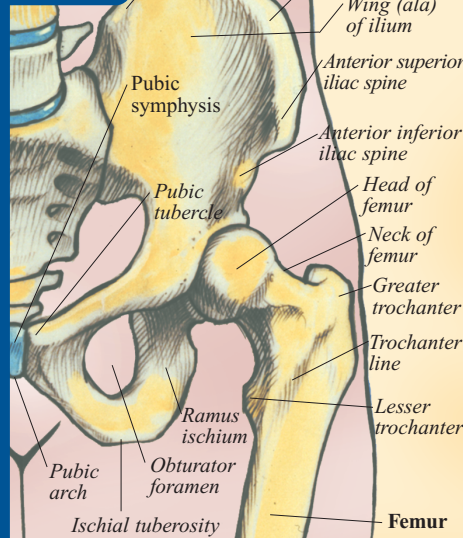
ELBOW (FRONT)



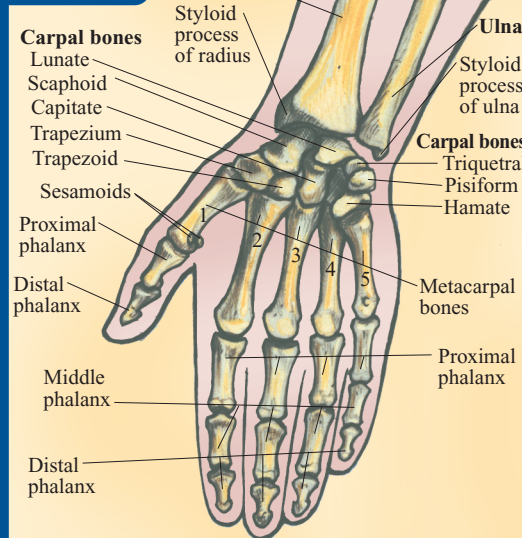
ELBOW (BACK)



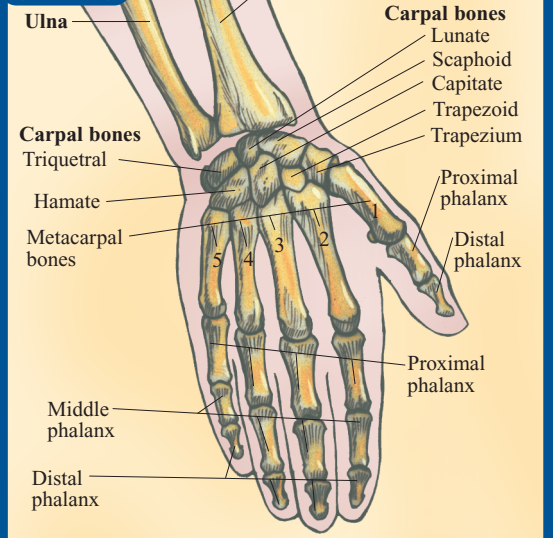
HIP (FRONT)



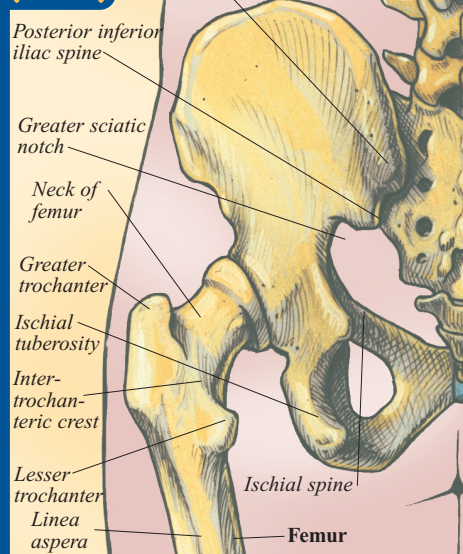
HAND (FRONT)



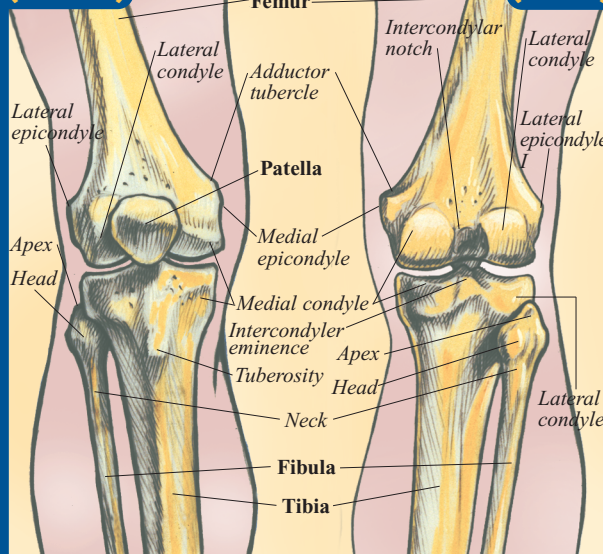
HAND (BACK)



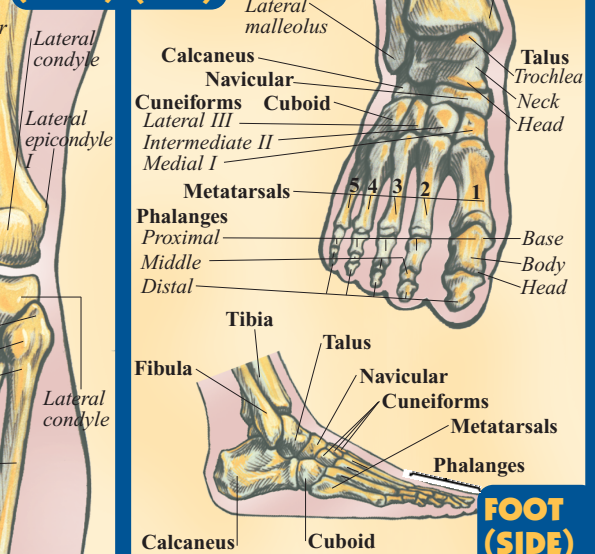
HIP (BACK)



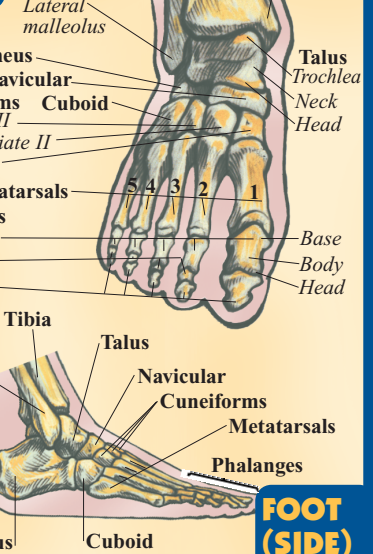
KNEE (FRONT)



KNEE (BACK)



FOOT (TOP)



FOOT (SIDE)

NOTE TO STUDENT

All rights reserved. No part of this publication may be reproduced or transmitted in any form, or by any means, electronic or mechanical, including photocopy, recording, or any information storage and retrieval system, without written permission from the publisher. ©2001, 2003, 2005 BarCharts Inc. 0608

Use this comprehensive study guide in the classroom, in the gym, at home or anywhere you need complete anatomical information. This guide is not designed to take the place of classroom attendance.

ISBN-13: 978-142320756-6
ISBN-10: 142320756-4



CREDITS
Images © Vincent Perez perezstudio.com
Layout: Rich Marino

free downloads & hundreds of titles at quickstudy.com

