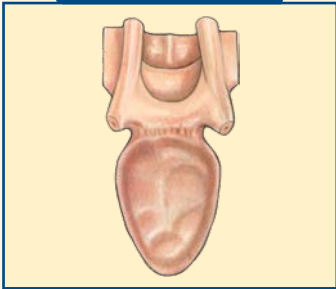


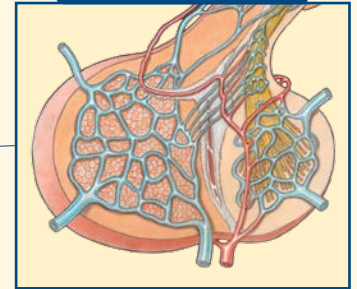
# ENDOCRINE SYSTEM

Full body map of the system & detailed labeled illustrations of each part

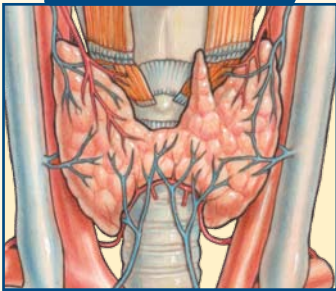
**Pineal Gland**



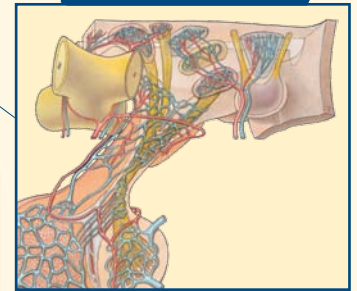
**Pituitary Gland**



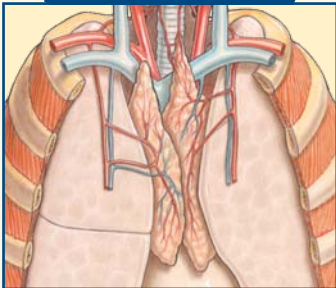
**Thyroid Gland**



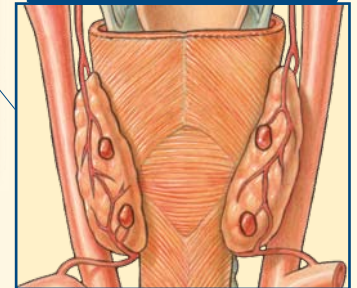
**Hypothalamus**



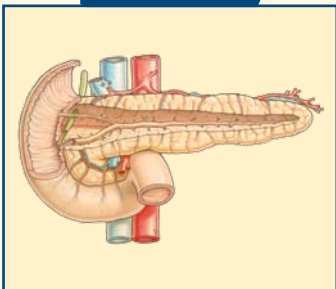
**Thymus Gland**



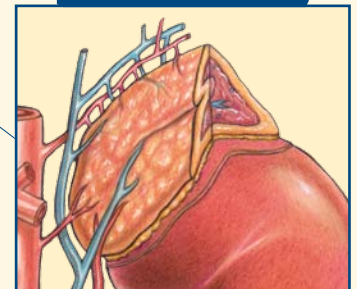
**Parathyroid Glands**



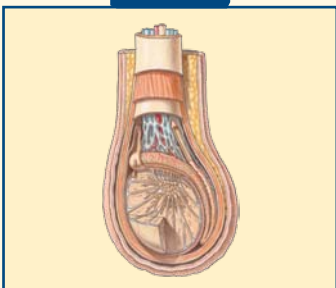
**Pancreas**



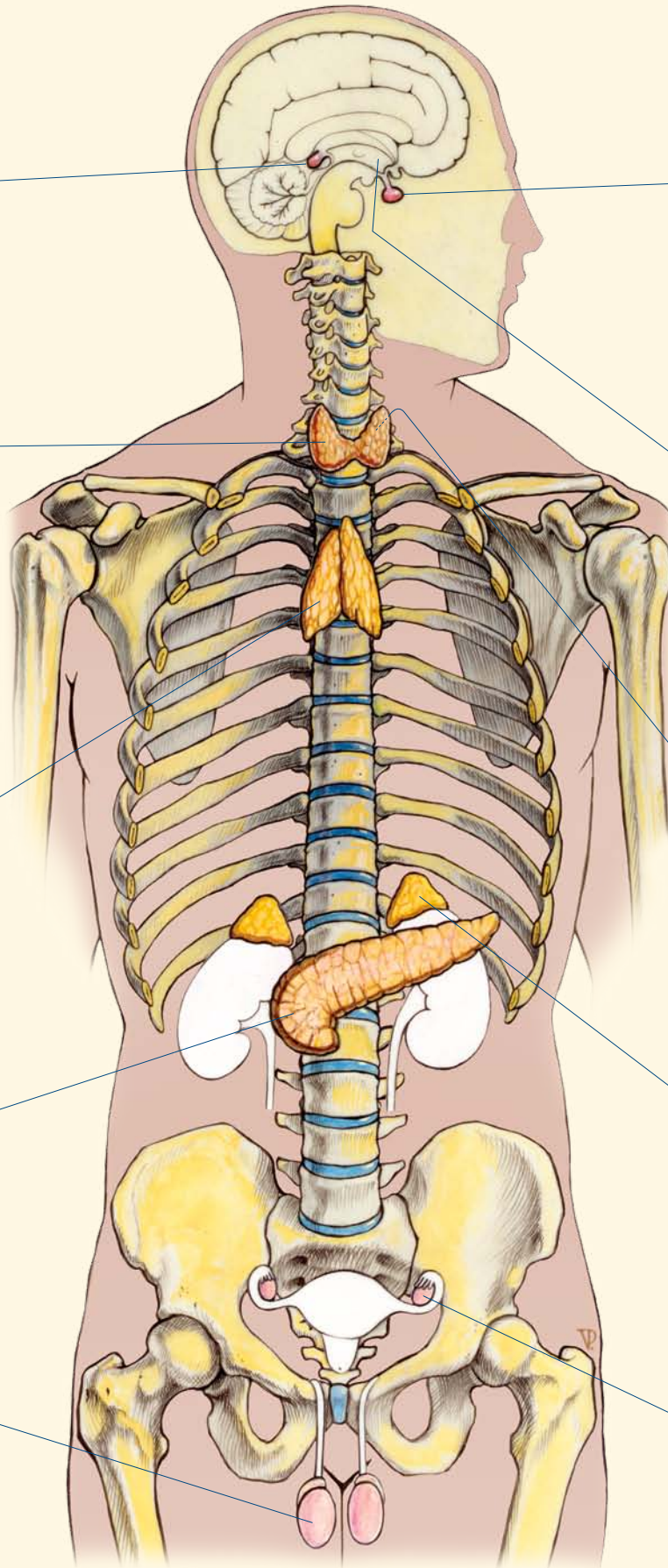
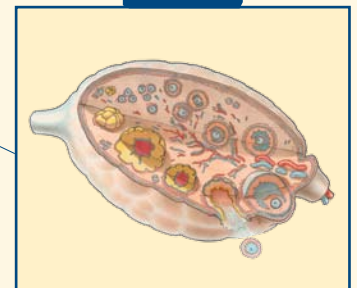
**Adrenal Gland**



**Testis**

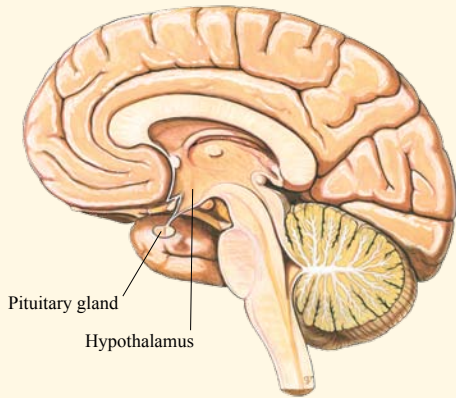


**Ovary**

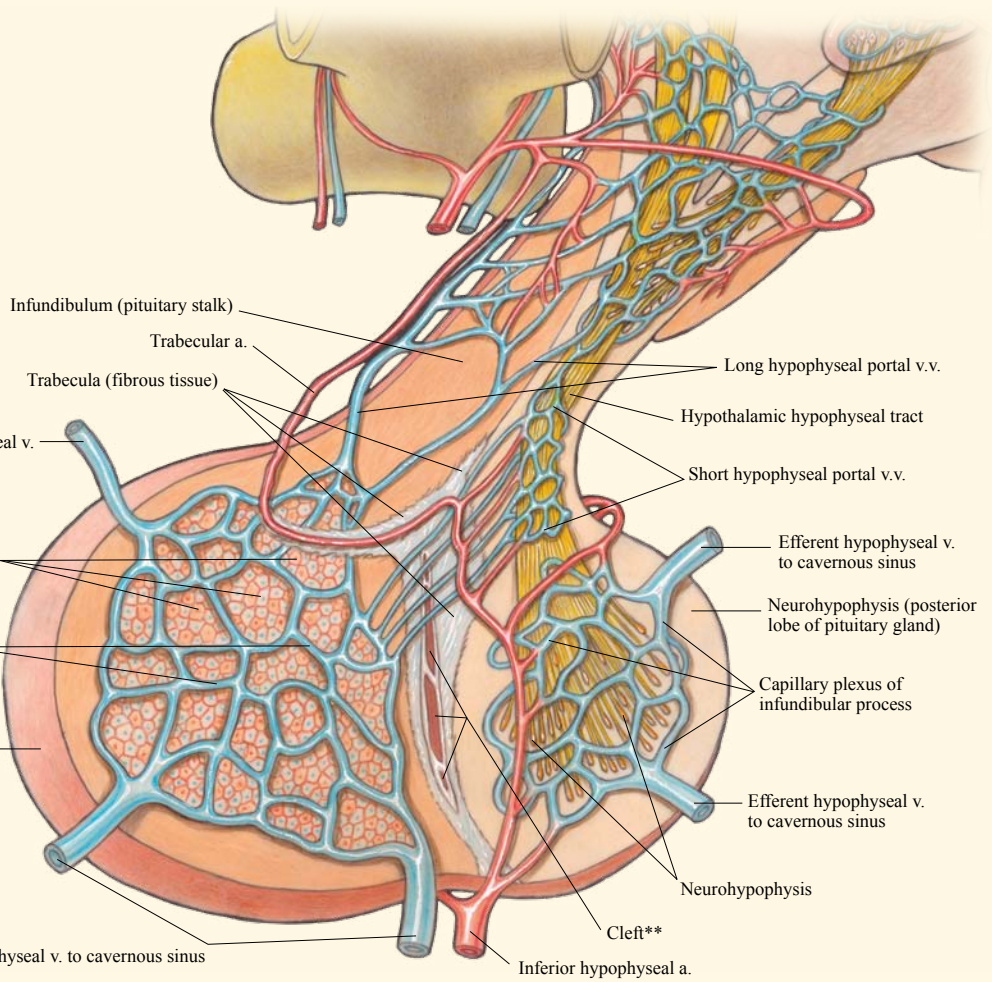


Brain - Medial (Sagittal) View

Pituitary Gland



Pituitary gland  
Hypothalamus

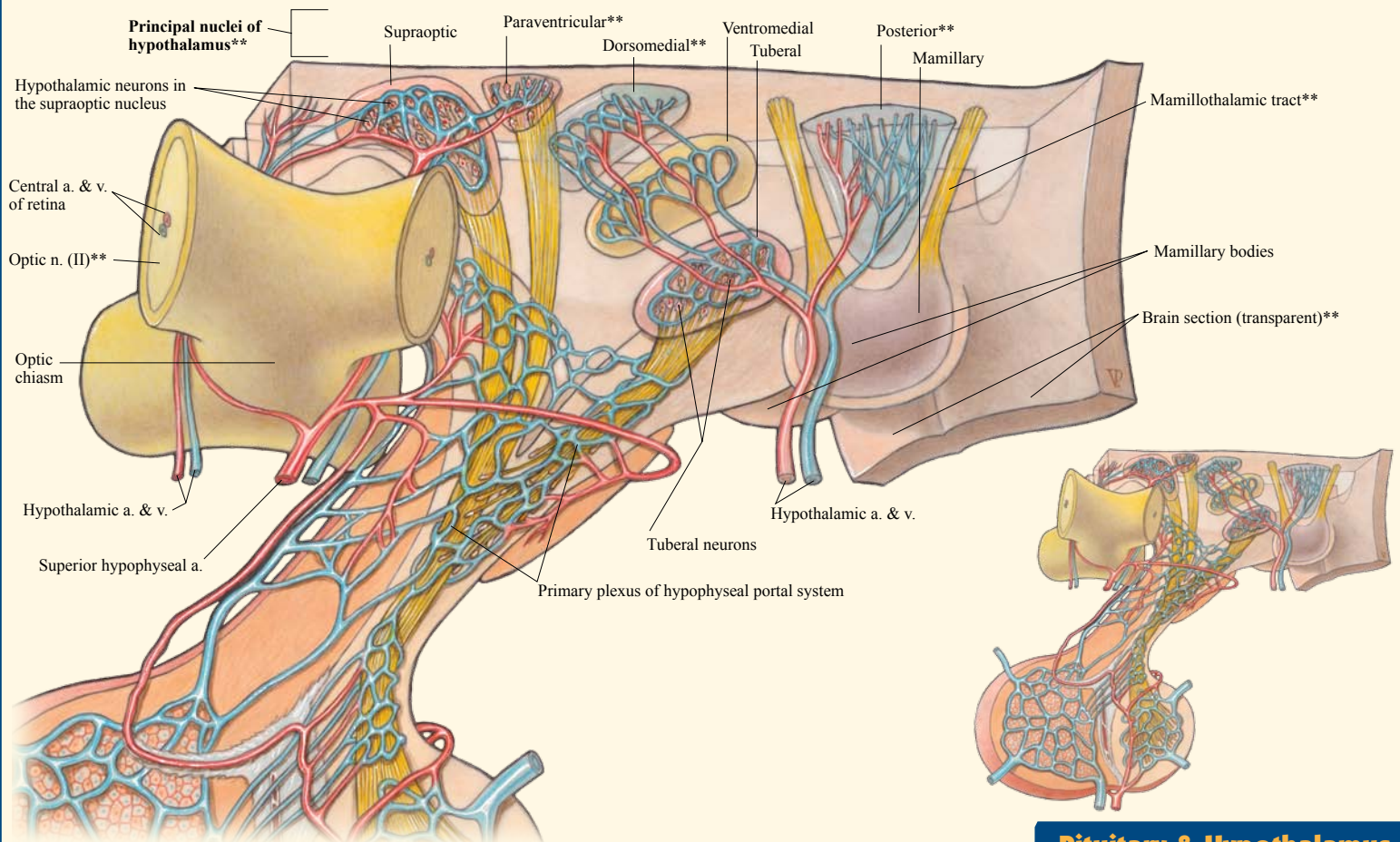


Infundibulum (pituitary stalk)  
Trabecular a.  
Trabecula (fibrous tissue)  
Efferent hypophyseal v. to cavernous sinus  
Secretory cells of adenohypophysis  
Secondary plexus of hypophyseal portal system  
Hypophysis (anterior lobe of pituitary gland)  
Efferent hypophyseal v. to cavernous sinus  
Inferior hypophyseal a.  
Cleft\*\*  
Neurohypophysis  
Efferent hypophyseal v. to cavernous sinus  
Neurohypophysis (posterior lobe of pituitary gland)  
Capillary plexus of infundibular process  
Efferent hypophyseal v. to cavernous sinus  
Short hypophyseal portal v.v.  
Hypothalamic hypophyseal tract  
Long hypophyseal portal v.v.

Abbreviations

- \*\* = cut
- a. = artery
- a.a. = arteries
- L. = Left
- l. = ligament
- m. = muscle
- m.m. = muscles
- n. = nerve
- R. = right
- v. = vein
- v.v. = veins

Hypothalamus

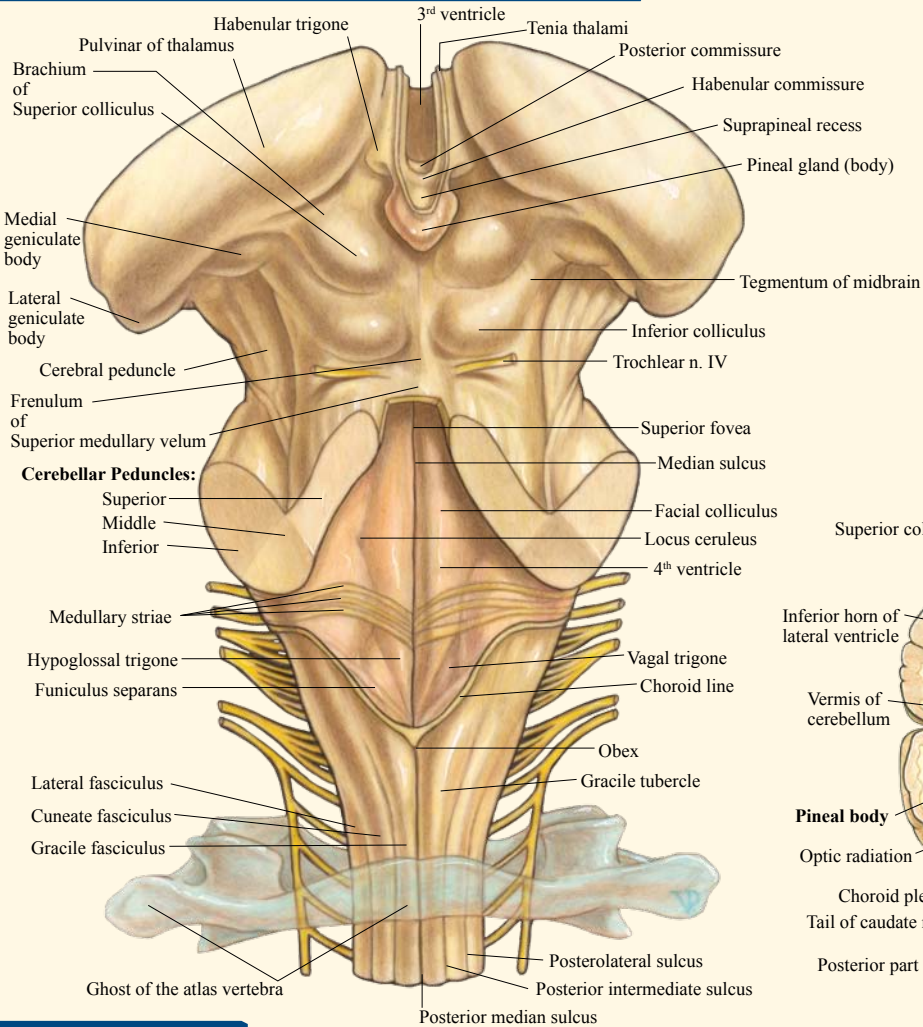


Principal nuclei of hypothalamus\*\*

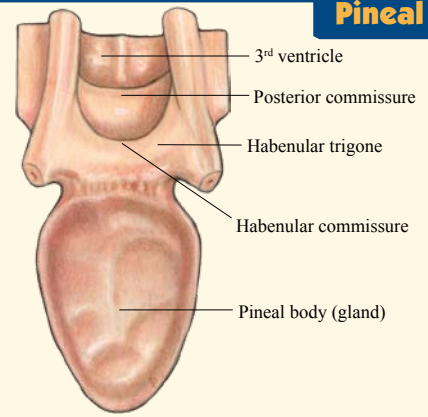
Supraoptic  
Paraventricular\*\*  
Dorsomedial\*\*  
Ventromedial  
Tuberal  
Posterior\*\*  
Mamillary  
Hypothalamic neurons in the supraoptic nucleus  
Central a. & v. of retina  
Optic n. (II)\*\*  
Optic chiasm  
Hypothalamic a. & v.  
Superior hypophyseal a.  
Tuberal neurons  
Primary plexus of hypophyseal portal system  
Hypothalamic a. & v.  
Mamillothalamic tract\*\*  
Mamillary bodies  
Brain section (transparent)\*\*

Pituitary & Hypothalamus

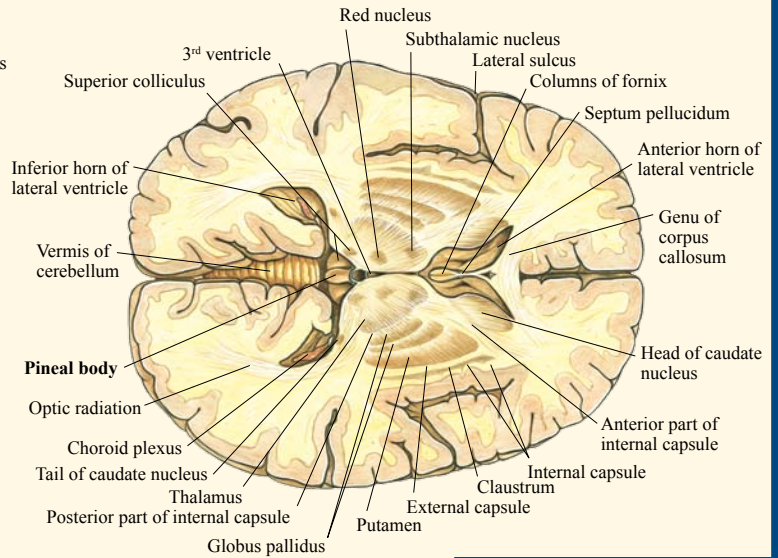
**Brainstem & Pineal Gland - Posterior View**



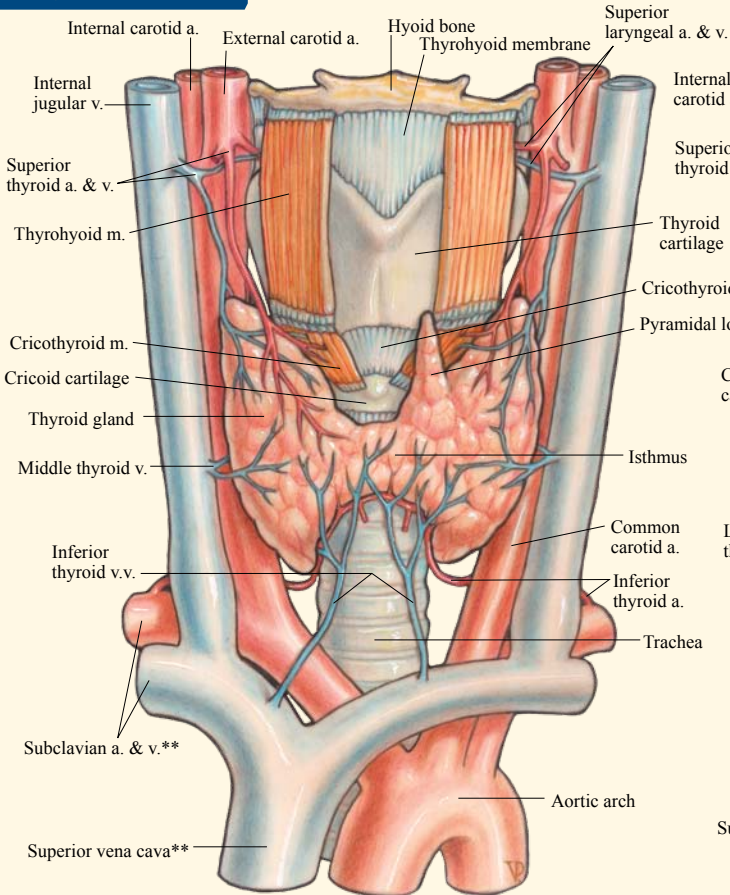
**Pineal Gland**



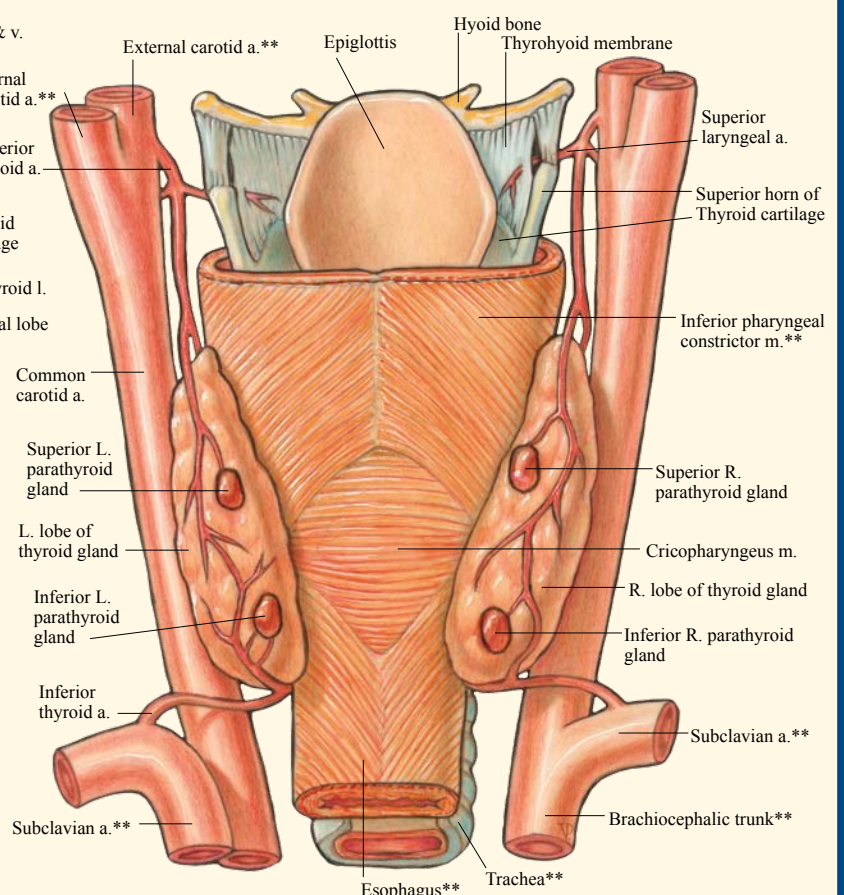
**Brain - Horizontal Section**



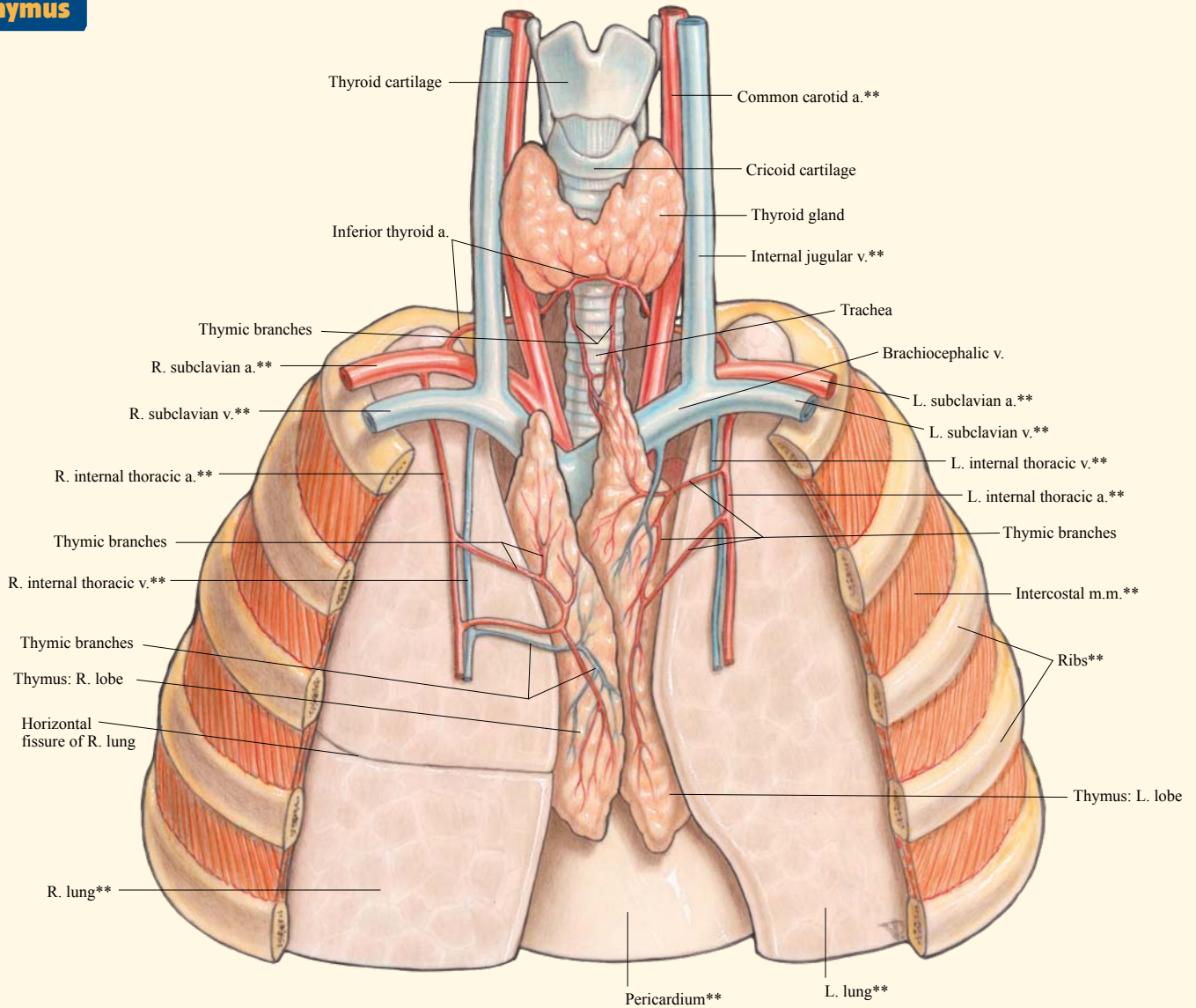
**Thyroid Gland**



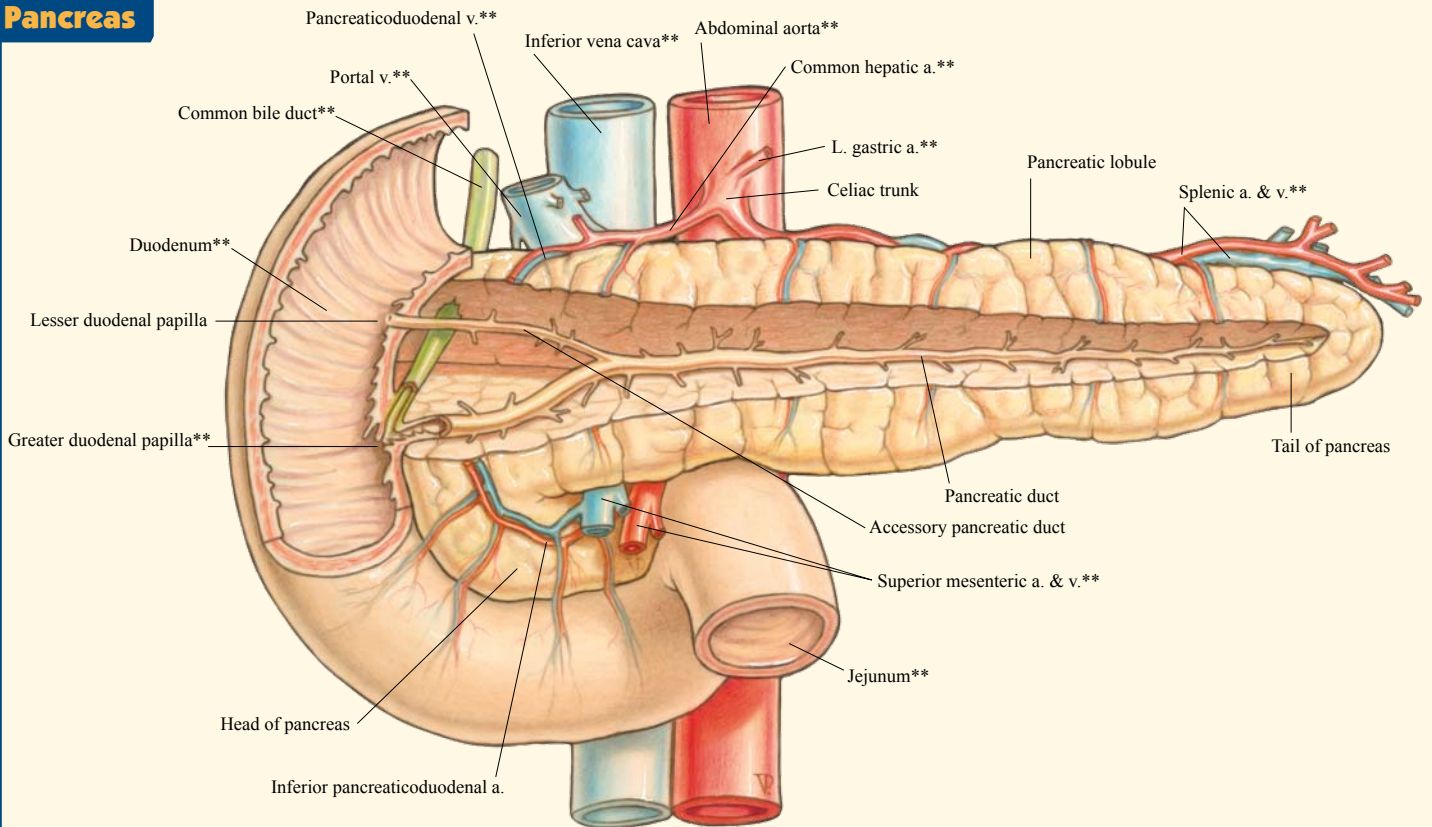
**Parathyroid Glands**



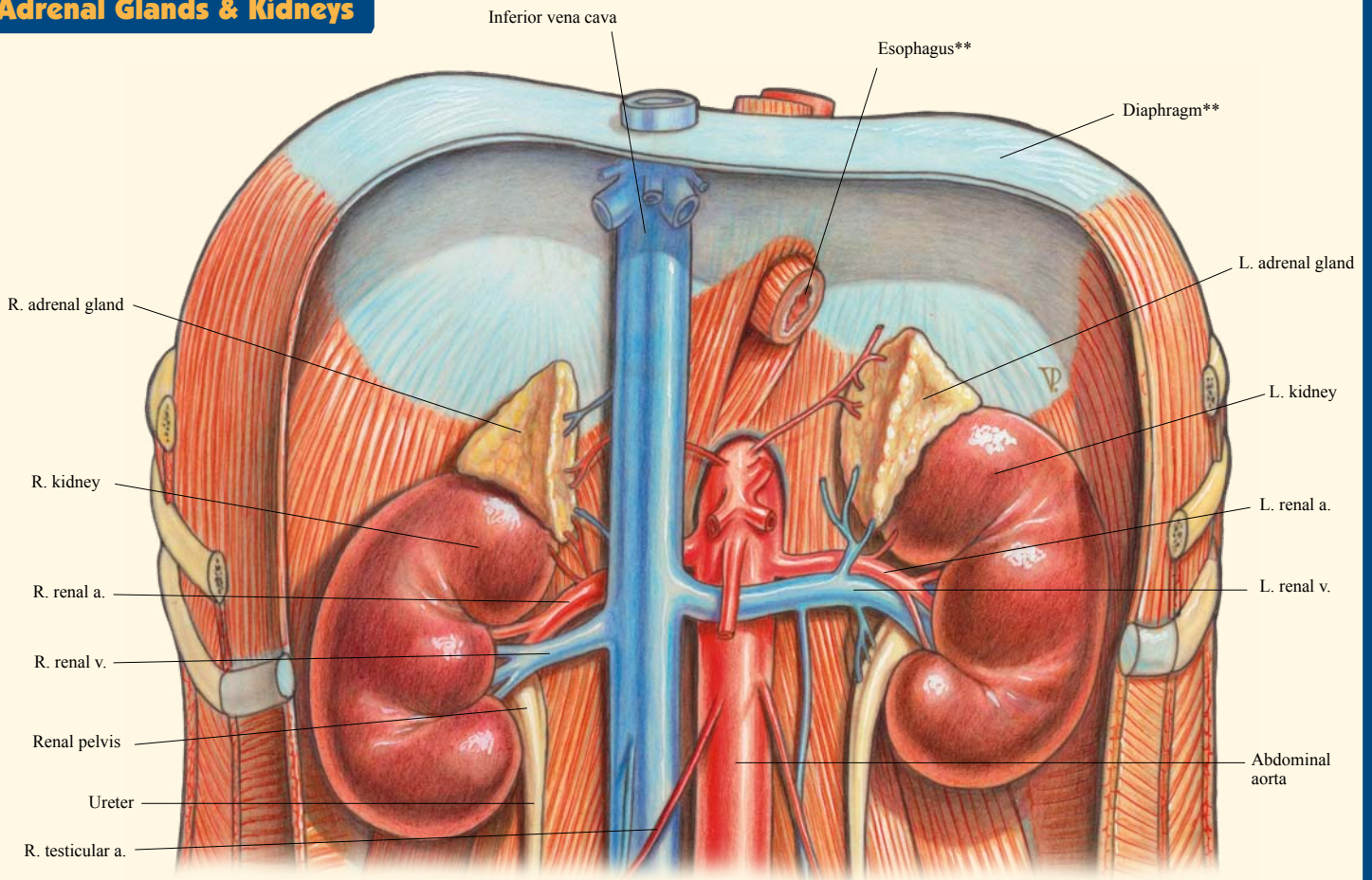
**Thymus**



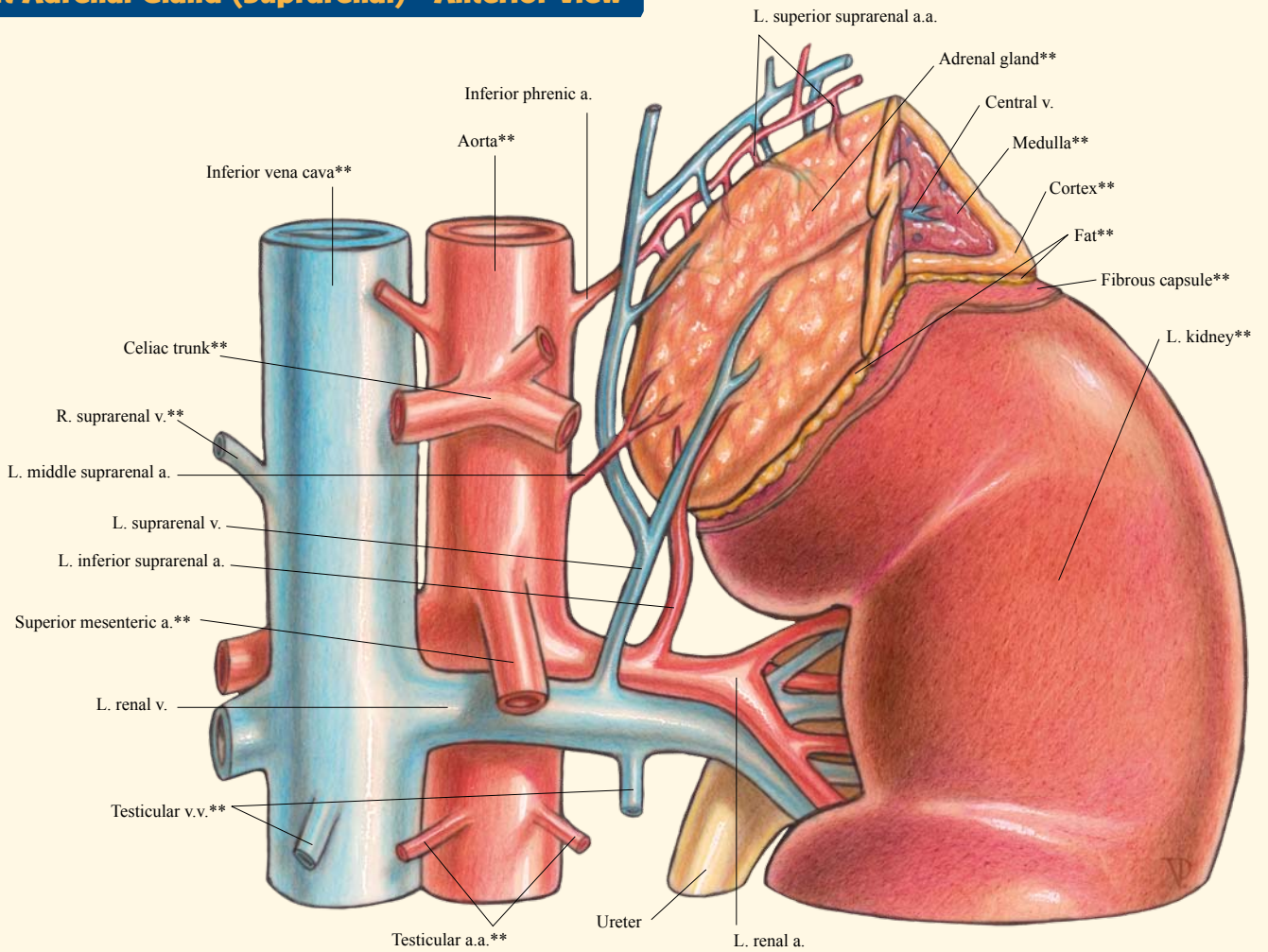
**Pancreas**



Adrenal Glands & Kidneys

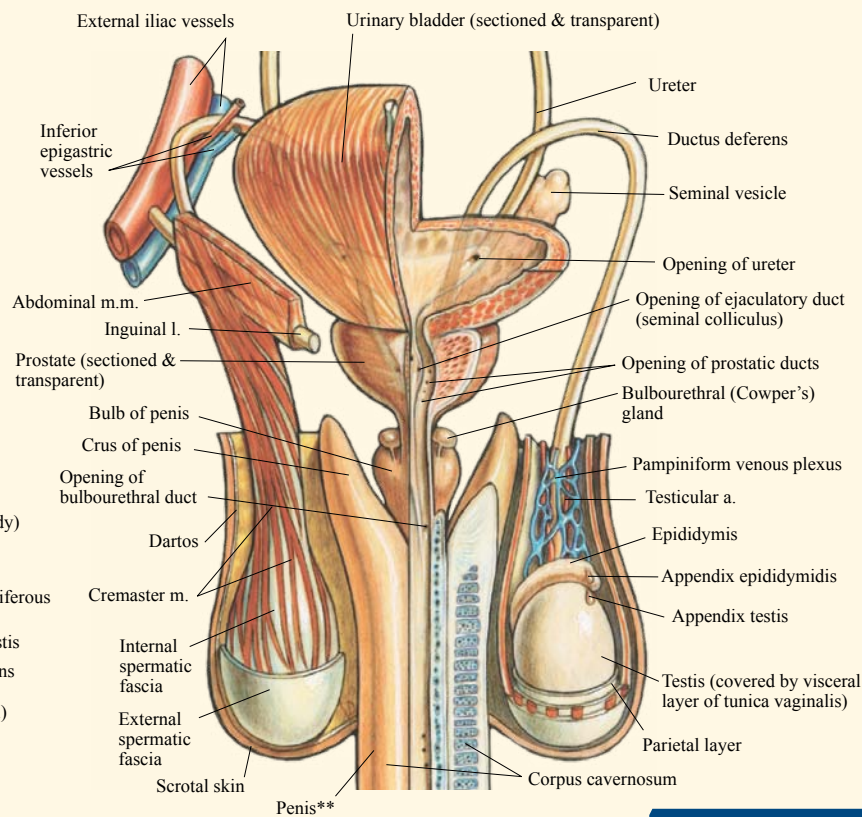
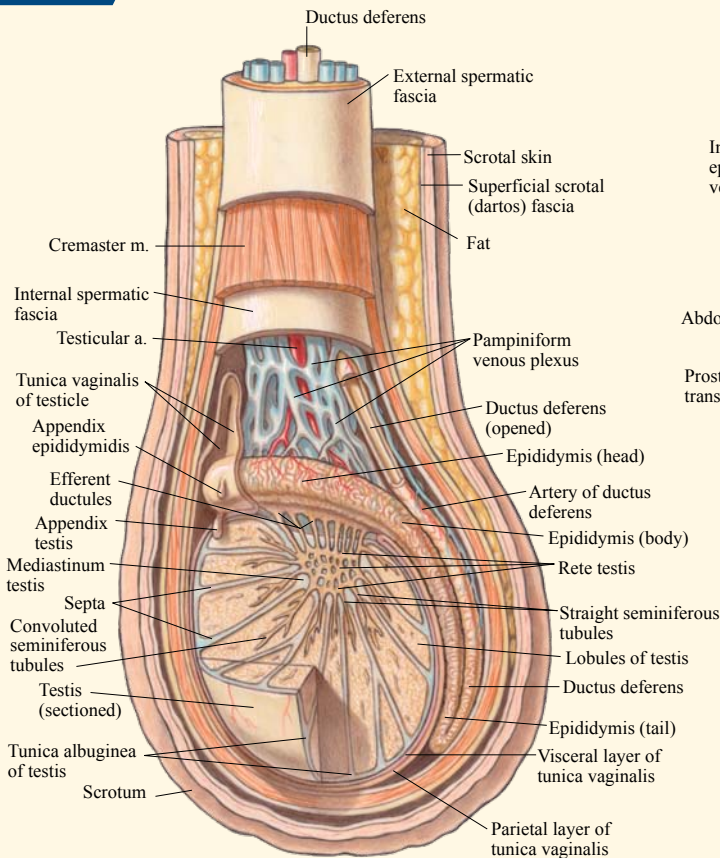


Left Adrenal Gland (Suprarenal) - Anterior View



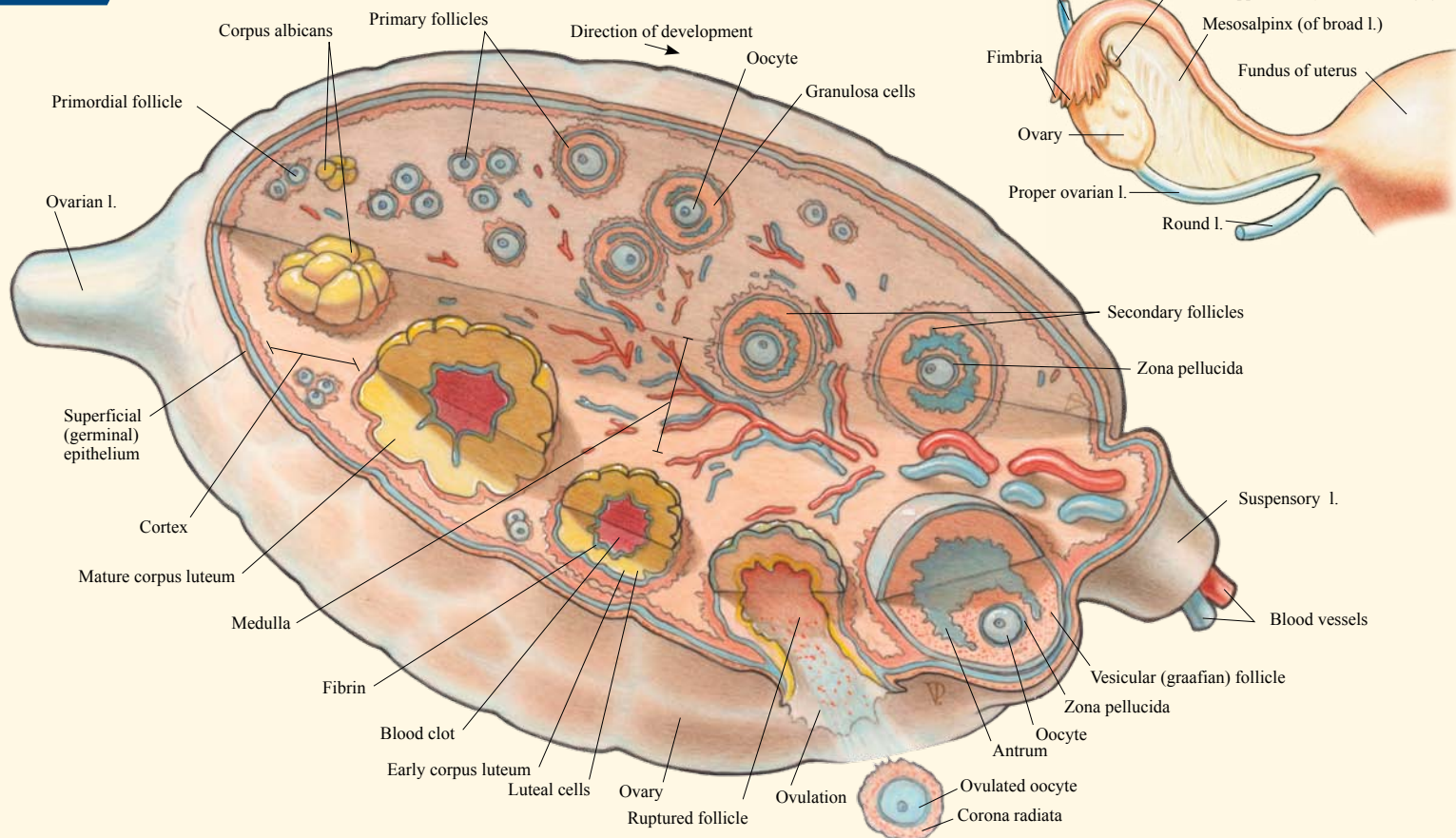
Testis

Testes In Situ



Ovary

Ovary In Situ



NOTE TO STUDENT

U.S.\$5.95

ISBN-13: 978-142321614-8

ISBN-10: 142321614-8

CREDITS

Images © Vincent Perez  
perezstudio.com

This QuickStudy® reference guide is the single most comprehensive "ENDOCRINE SYSTEM" guide ever published. Use it to your advantage in class, during homework and as a memory refresher while preparing for exams. Reinforce your knowledge of human anatomy with our "ENDOCRINE SYSTEM" guide. It is a powerful study tool that can be quickly and repeatedly referred to during and well beyond your college years. All rights reserved. No part of this publication may be reproduced or transmitted in any form, or by any means, electronic or mechanical, including photocopy, recording, or any information storage and retrieval system, without written permission from the publisher. Made in the USA. ©2010 BarCharts, Inc. 1210 Customer Hotline # 1.800.230.9522



free downloads &  
hundreds of titles at  
quickstudy.com

